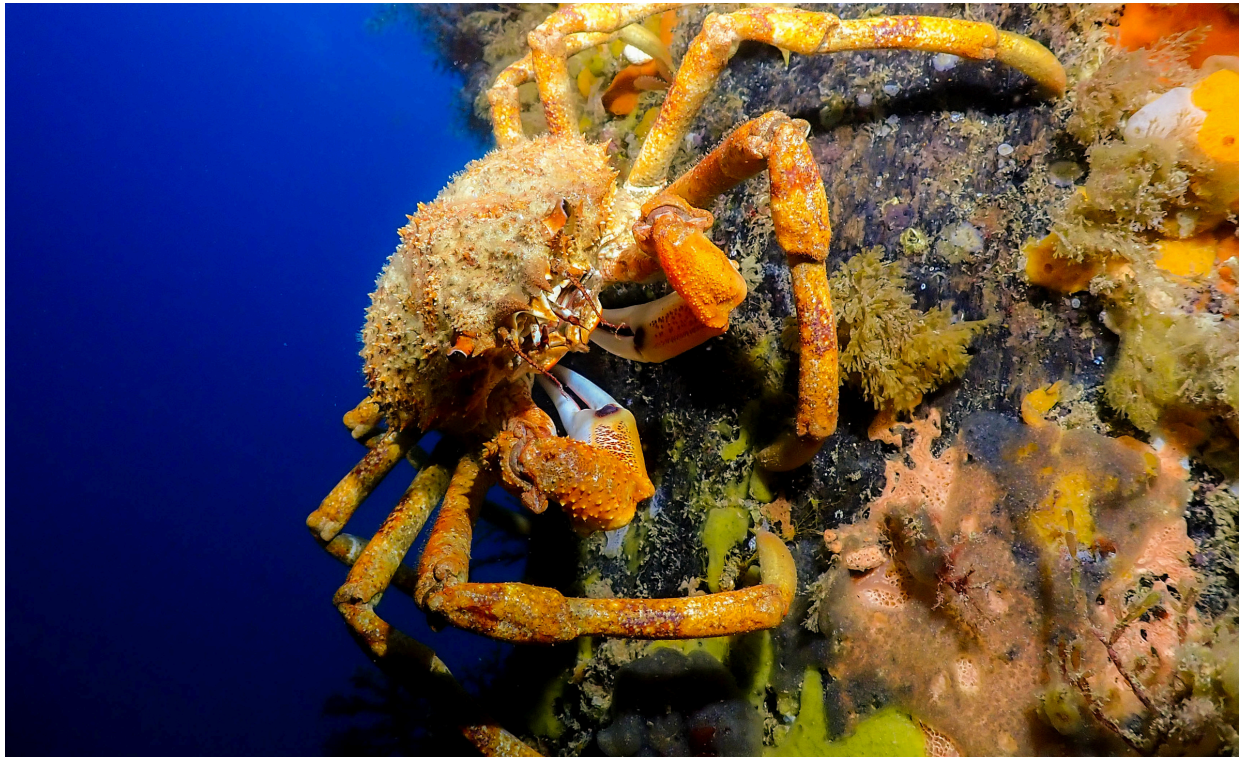


FROM THE GREAT SOUTHERN REEF, WITH LOVE



"We need to respect the oceans and take care of them as if our lives depended on it. Because they do."

Sylvia Earle, marine biologist, oceanographer, explorer, author

Did you know that just beyond our beaches, in Australia's underwater backyard, lie vibrant, hidden treasures? Have you ever wondered what you'd find if you slipped beneath the waves? *"From the Great Southern Reef, with love"* invites you to journey below the surface of Australia's southern coast and discover a world of colour, delicate beauty, and untold wonder. Stretching from Kalbarri in Western Australia to Coolangatta in Queensland, the Great Southern Reef fringes the coastlines where over 70% of Australians live—yet few know its name.

Even fewer know that most of the species found there exist nowhere else on Earth. Through Elodie's lens, this exhibition reveals the ocean's best-kept secret, captured with awe and deep reverence. Her bold, colourful images feature marine life in striking contrast against deep blues and inky blacks—inviting viewers into an otherworldly realm that often goes unseen. This is both a celebration of what remains and a reminder of what's at stake. It's a heartfelt call to see, love, and protect the extraordinary reef on our doorstep.

Each print or lamp sold will contribute to supporting Elodie's journey with the Homeward Bound program, an initiative dedicated to empowering women in STEMM with the tools and training to become impactful, strategic leaders. Thank you for your support!

MEET THE ARTIST



Elodie Camprasse, Marine Ecologist, Underwater Photographer

Elodie is a marine ecologist and science communicator with a passion for ocean biodiversity, scuba diving, citizen science, and connecting people with nature. Originally from France, she began her career studying seabirds and marine mammals in the subantarctic before moving to Australia to complete a PhD in seabird ecology. She then dedicated her work to both research and undergraduate teaching. At Deakin University, Elodie has led a citizen science program focused on uncovering the secrets of the great spider crab gatherings—one of Australia's most mysterious marine spectacles. She now works as a senior consultant at Fathom Pacific and was recently

appointed an Honorary Fellow at Deakin University. In 2024, she was selected for the prestigious Homeward Bound program, a global leadership initiative for women in STEMM.

A self-taught underwater photographer, Elodie is particularly passionate about storytelling and showcasing the rich biodiversity of the Great Southern Reef (the Southern coastline of Australia and bridging knowledge gaps around its lesser-known species—often in collaboration with the community through citizen science.

Connect
with Elodie!

